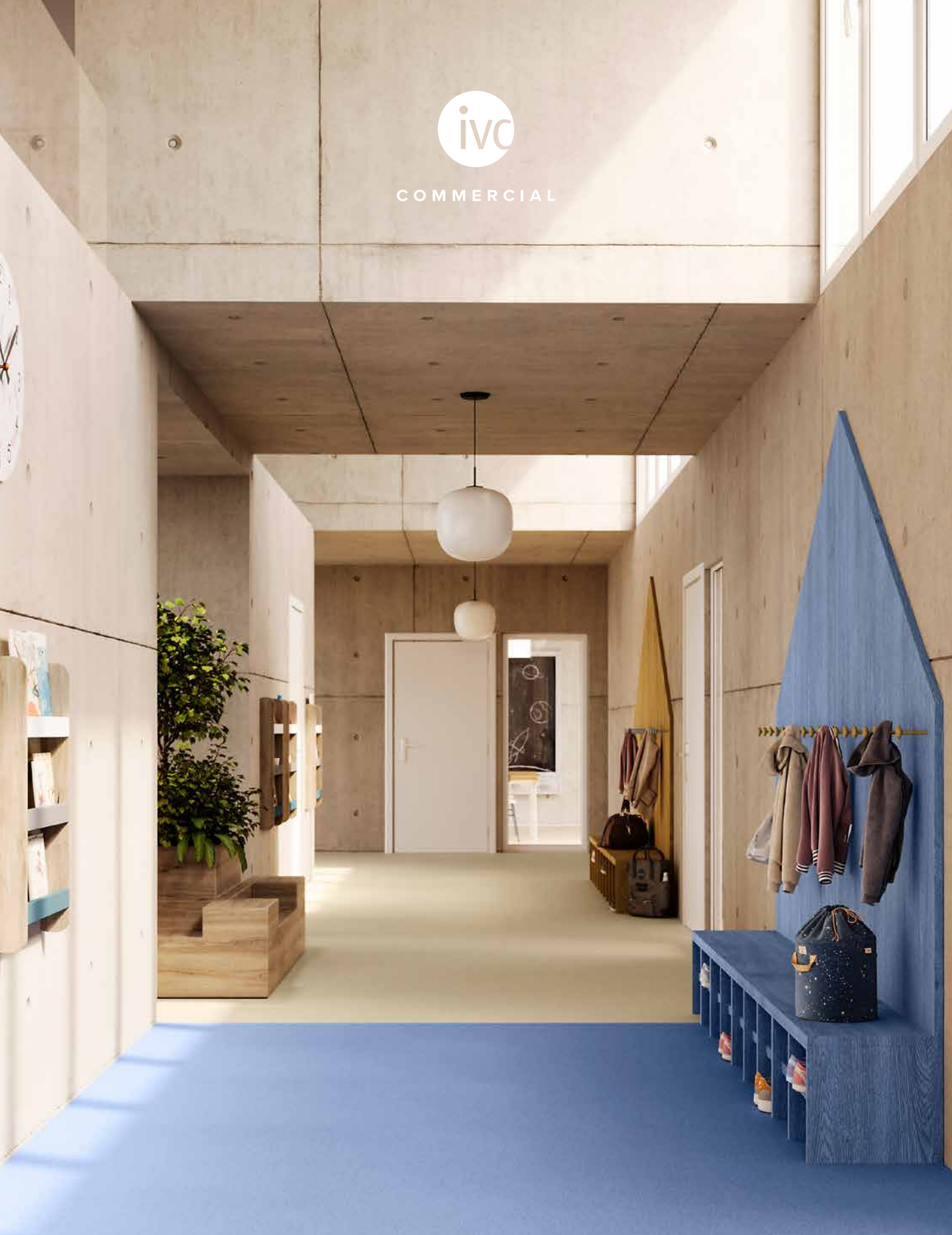




COMMERCIAL



Silento 55

Semi-loose-lay acoustic flooring



Silento 55

Semi-loose-lay acoustic flooring

Thanks to its **semi-loose-lay** fitting and high-performance acoustic backing, Silento 55 makes it easy to achieve a quiet floor for all kinds of projects.

This easy-to-install floor offers an **impressive 20 dB impact sound reduction**, absorbing footfall noise and blocking sound transmission to create a peaceful environment. It comes in a wide selection of designs and colours, balancing good looks with excellent acoustic performance.

Our patented **Hyperguard+ PUR** technology creates a low-maintenance, stain- and dirt-resistant surface. Combined with a durable 0,55 mm wear layer, this means every Silento 55 floor will stay looking good even under heavy use.

And, helping to reduce our environmental impact, this flooring is **100% recyclable** through Recover, our dedicated take-back programme for recycling old vinyl flooring.

Summary

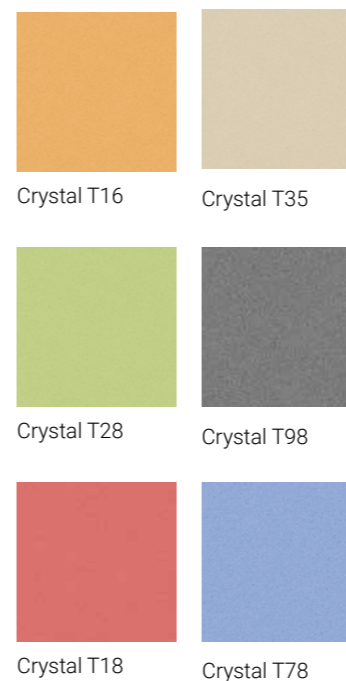
01. Inspiration	04
02. The collection	10
03. Technical information	12
04. Sustainability	28

INSPIRATION

Colours that inspire

HOW COLOURS EVOKE EMOTIONS AND ENERGY

Silento 55's vibrant Crystal colours inspire creativity, fuel imagination and stimulate concentration. With an acoustic backing that absorbs noise, it's an excellent choice for educational environments such as schools, nurseries and libraries, where the power of colour can be used to enhance learning and support emotional development. Light blue, for example, is thought to promote calmness and enhance productivity, while red commands attention and infuses the space with energy.



Crystal T16-T35-T28

Get dynamic with the power of colour

The unique properties of colour can be used dynamically throughout classrooms and nursery settings, **establishing zones** within a room to help break up the space and to provide dedicated areas for different tasks. Incorporating **green spaces for quiet reflection** and reading, **orange for focused tasks** and a neutral colour for common areas and pathways, for example, is a great way to create more inspiring learning environments for future generations.

INSPIRATION

Plank designs in different sizes

Wide, narrow, tall or small; our designers have created wood-effect designs with a variety of plank sizes to bring the perfect balanced look to every project. Showing that beauty comes in all shapes and sizes, every design captures a distinctive look.



From the striking Burned Wood and Stockholm to the subtle Colmar and balanced Tavel, Silento 55 wood planks offer the versatility to create stunning wood floors in private areas and public spaces, no matter how big or small. With the endless plank of Elias, you can achieve a unique wood effect that's only possible with our seamless vinyl floor. As an extra, the Elias design, makes Silento 55 even faster to install. More info about endless wood on page 24.



Burned Wood

Silento 55's Burned Wood design brings the enchanting essence of nature indoors, masterfully crafted to replicate the intricate details of genuine wooden flooring. This collection offers an authentic alternative to natural wood, recreating serene and subtle textures and all the cracks and knots of rustic markings.

Plank sizes



Burned Wood T37
20 x 120 cm



Stockholm T37
16.6 x 120 cm



Tavel T17
12.5 x 100 cm



Colmar T49
6.25 x 33.30 cm

Other colours are available. See p14.

INSPIRATION

Noralie, feels more like home

Creating a soft and cosy space

Noralie's unique, linen-like effect adds a layer of aesthetic comfort to any project's floors. Our designers have sought inspiration in organic textiles to introduce a **calming design** that softens spaces and makes them feel more like home. Noralie can also be used alongside Silento 55's wood designs to zone different areas while still resulting in a natural look.

For residential homes, care homes and nurseries in particular, creating the right atmosphere is key to instilling a **sense of well-being** and help improve the quality of life. A floor design that echoes the familiar textiles and finishes of a home reinforces a sense of comfort and calm.

Noralie creates a reassuringly domestic feel that supports residents in feeling at home. Its gentle, organic colour palette allows for personal expression while maintaining a feeling of harmony.



Inspired by
organic textiles

Noralie

Collection overview

WOOD



Tavel T19 Tavel T18 Tavel T14 Tavel T17



Colmar T38 Colmar T49 Colmar T65



Burned Wood T37 Burned Wood T94



Stockholm T37 Stockholm T95

SEAMLESS



Elias T32 Elias T94

HUNGARIAN POINT



Heracles T36

MATERIAL AND COLOUR



Crystal T35 Crystal T18 Crystal T16



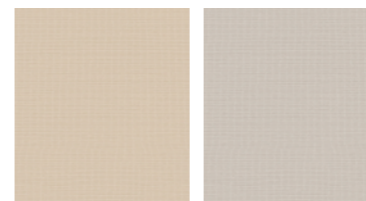
Crystal T28 Crystal T78 Crystal T98



Styx T35 Styx T39 Styx T98



Cosmos T91 Cosmos T95



Noralie T34 Noralie T94

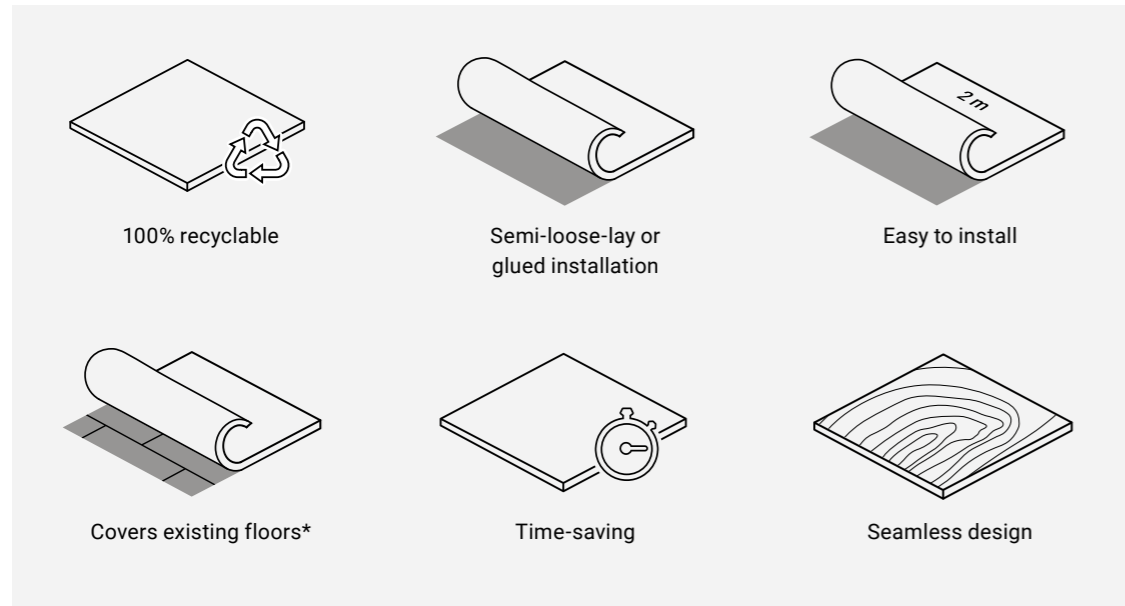
2 m | wear layer: 0.55 mm | total thickness: 3.20 mm

Order free samples



TECHNICAL INFORMATION / INSTALLATION USP'S

Silento 55: the hassle-free solution



*After validation of technical service.

TECHNICAL INFORMATION / INSTALLATION GUIDE

Our tailor-made service

We offer a **tailor-made service** to help make the most of our high-quality products. For all our floors, we provide a guide containing all the necessary information for proper **installation, cleaning and maintenance**.

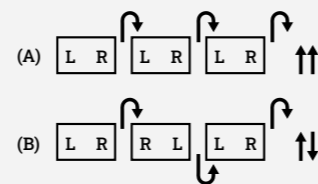
Installation direction

Always follow the installation instructions about direction:

REVERSE (B) ↑↓
DO NOT REVERSE (A) ↑↑

L= left, R= right

The arrow on the back of a vinyl roll indicates the direction of production.



Consult and download the guides on our website



TECHNICAL INFORMATION / THERMAL CONDUCTIVITY

Underfloor heating and cooling

Thermal conductivity

Heterogeneous sheet vinyl is one of the best types of flooring to use with underfloor systems.

And with a thermal conductivity of **0.088 w. K/W**, Silento 55 is an excellent choice for both underfloor heating and cooling.

Its very low thermal resistance means that heat and cold from the system below

passes easily through the vinyl, ensuring a comfortable temperature in the room. Because the room warms up or cools down faster, **energy consumption is also reduced**, making life more affordable.

Vinyl flooring also contributes to wellbeing by providing a **warm and comfortable surface underfoot**.

TECHNICAL INFORMATION / SEMI-LOOSE LAY

Installation with loose lay tape

With Silento 55 we get a fast and easy installation. This semi-loose lay installation uses our specialised double-sided adhesive tape at edges and seams to fix Silento 55 in place.

100 mm x 50 m (343915)



Installation step by step



1. PREP THE FLOOR

Prepare the floor, ensuring it is clean, free from grease, oil, dirt and debris, and in good repair. Place Loose Lay Tape around the perimeter of the room.

2. ROLL OUT THE VINYL

Roll out and cut the floor using the double-cut method, ensuring a suitable overlap at the seams.

3. TAPE THE EDGES IN PLACE

At Lift the edges of the floor and apply the adhesive tape to each seam. Then, one seam at a time, take the protective foil off the tape and re-lay the floor into position.

4. ROLL TO FIX

Use a roller along all the seams and edges to ensure a lasting fix until it's time to replace the floor.

Why choose semi-loose lay?



Benefits for installers

- ✓ Quicker renovation of spaces
- ✓ Can be installed on top of existing floors
- ✓ Reduced preparation time
- ✓ No glue
- ✓ No odour
- ✓ No waiting time between stages
- ✓ Immediately suitable for occupation
- ✓ Up to 30% cost saving compared to adhesives
- ✓ 20% faster than glue-down installation
- ✓ Simple uplift and removal for Recover recycling

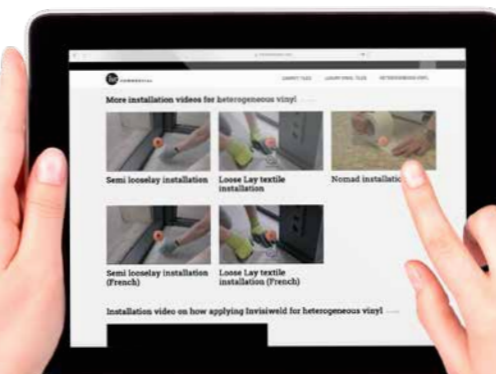


Benefits for projects clients

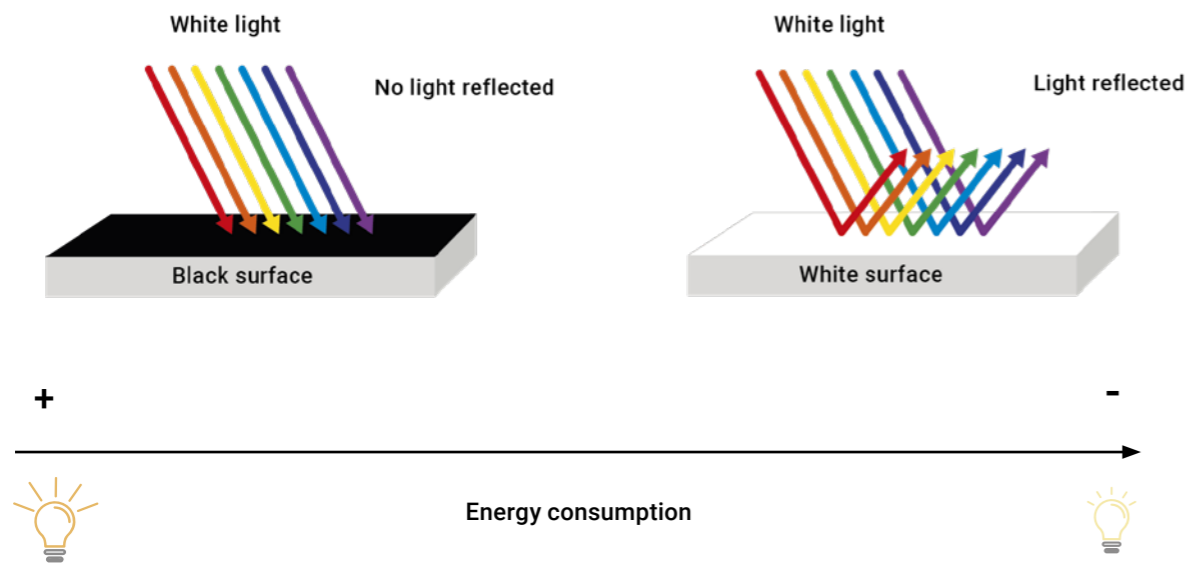
- ✓ Fast construction time
- ✓ Optimised installation cost
- ✓ No glue
- ✓ 100% recyclable through Recover take-back
- ✓ No damage to subfloor when replacing
- ✓ Made with green energy

Consult and download our guides on our website.

Download our complete guide to semi-loose-lay installation



The importance of reflected light



What is LRV?

The amount of light that a surface reflects or absorbs is measured by a universal scale called Light Reflectance Value, or LRV. This is indicated by a percentage on a scale from 0 (a perfectly absorbent surface such as black) to 100 (a completely reflective, pure white surface). In addition to its colour, the structure and finish of a product contributes to its LRV.

Why is LRV important?

Brighter rooms need less artificial lighting, reducing energy consumption. A balanced LRV is also beneficial for the wellbeing of residents. We offer a diverse collection with numerous designs and colours, making it easier to optimise the brightness in every room.



CREATING HARMONY

To ensure a balance of colours between the walls, floor and ceiling, their LRV indices should vary by at least 30 points, creating a harmonious environment.

TECHNICAL INFORMATION / TREATMENTS

Flawless maintenance with Hyperguard+

Thanks to Hyperguard+, our specially developed protective top layer, Silento 55 floors are both easy to maintain and highly **resistant to stains and scratches**. This innovative surface treatment offers durability without compromising on design, and with the same technical characteristics in terms of acoustics and resistance. In short, Silento 55 is a **durable vinyl floor** that will retain its good looks for many years, even under heavy use.

No need for additional polishing, sealing, or waxing after installation.



No need for additional polishing, sealing, or waxing after installation.



The tests



Test principle (ISO 26987-2008)

Specified substances in liquid or paste form are placed on a test piece for defined periods and then removed. After cleaning has been carried out, the resulting change of appearance is assessed under specified lighting conditions.



Duration of contact

2 hours



Cleaning procedure

Each sample is washed with a cleaning agent (water + soap) before the final assessment.

The results

Internal test

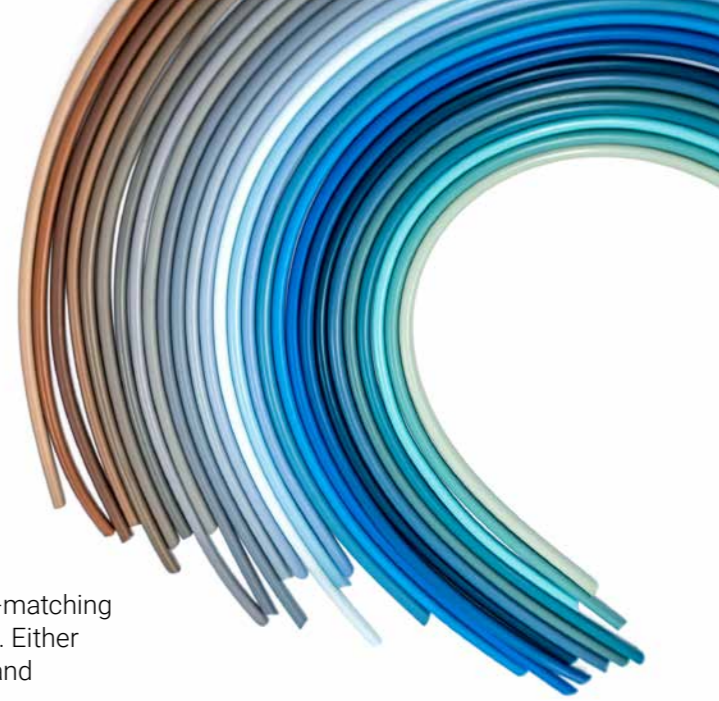
- ✓ Mayonnaise
- ✓ Ketchup
- ✓ Mustard
- ✓ Chocolate
- ✓ Coffee
- ✓ Tea
- ✓ Milk
- ✓ Red wine
- ✓ Alcohol gel
- ✓ Isobetadine
- ✓ Shoe polish
- ✓ Lugol

External test

- ✓ Desinfectant 2,5%
- ✓ Benzine
- ✓ Ammonia solution 10%
- ✓ Ethyl alcohol 48%
- ✓ Citric acid 10%

- ✓ not changed
- ! slightly changed
- ! moderately changed
- ✗ greatly changed

Silento 55 floors achieved the best possible scores in extensive stain tests using a variety of substances.



TECHNICAL INFORMATION

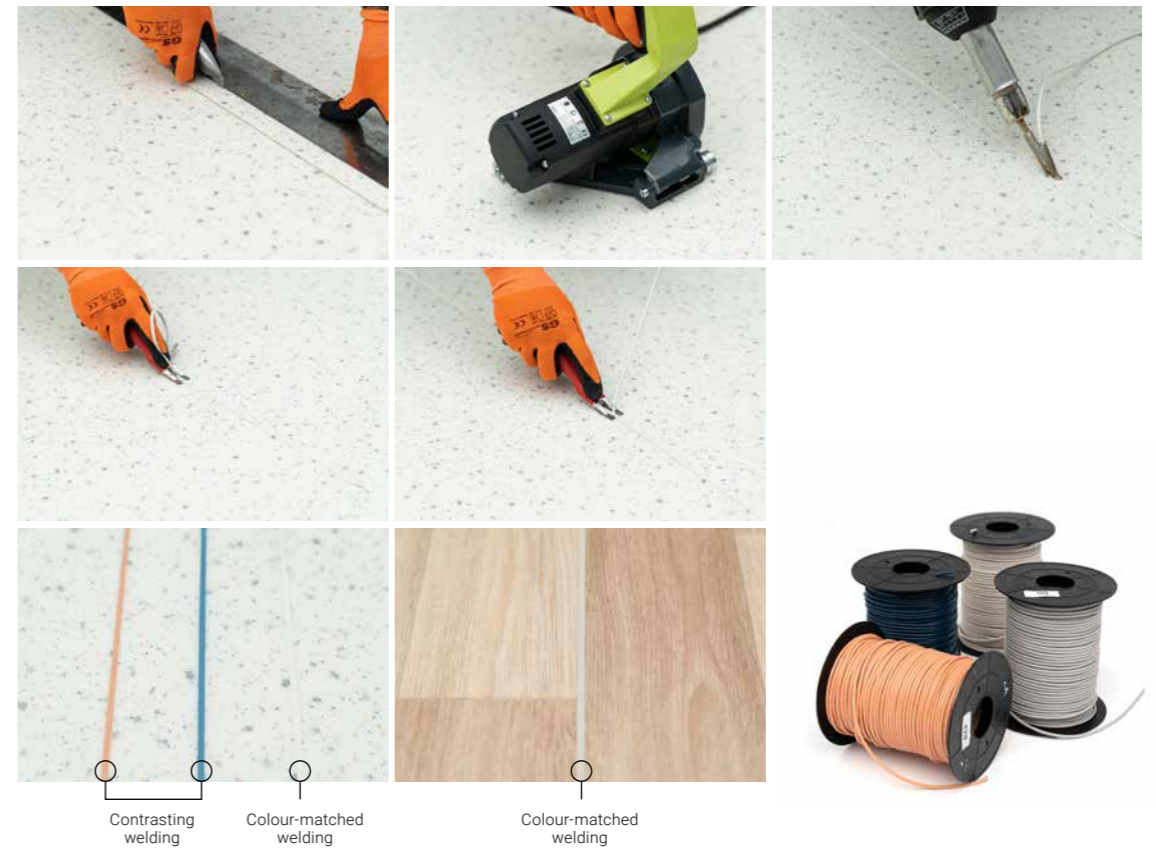
Hot welding

ø 4 mm x 100 m length

We offer a wide range of welding rods for colour-matching or contrasting with our heterogeneous sheet vinyl. Either way, the result will be a floor that is both strong and beautiful.

Warranted by IVC Commercial.

The process

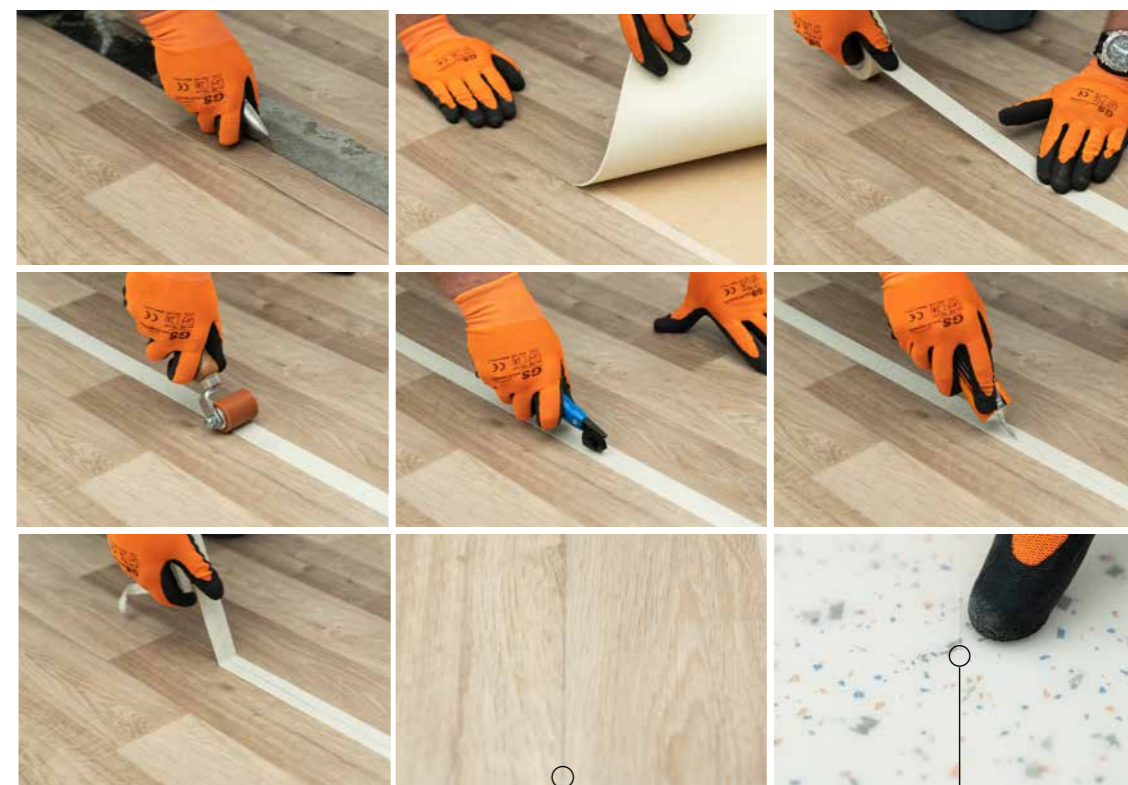


This is a summary of the full installation instructions. Please check ivc-commercial.com for more details.

TECHNICAL INFORMATION

Cold welding Invisiweld

Invisiweld technology has the ability to achieve **an almost imperceptible join** with all IVC Commercial heterogeneous vinyl floor coverings. Fast, clean and easy to use, Invisiweld is economical and leaves a seamless, strong and watertight join.



Invisiweld

Invisiweld

This is a summary of the full installation instructions. Please check ivc-commercial.com for more details.

TECHNICAL INFORMATION

All-over wood for easy installation



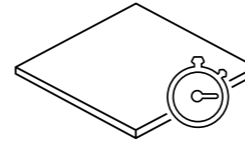
Elias T32

Seamless design

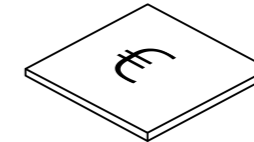
Wood design with a unique trick up its sleeve.

An all-over woodgrain pattern (without visible plank outlines) is not only beautiful to look at, but also easy to install. Because you don't have to match up a plank pattern, these floors can be installed as quickly as single-colour or texture-effect floors. Retaining the look of wood while reducing installation waste, our seamless, woodgrain-effect floors are a cost-effective and responsible choice. Just unroll for a great-looking floor in no time at all.

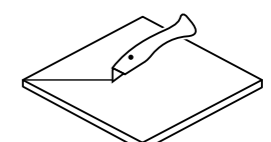
Effortless installation



Quick installation



Cost-effective



Less cutting waste



Elias T94



Elias

Elias

A man and a young girl are seen from behind, holding hands and looking out over a vast landscape at sunset. The sun is low on the horizon, casting a warm, golden glow across the sky and the rolling hills. In the distance, several large wind turbines are silhouetted against the bright sky. The foreground is a grassy field with some small flowers. The overall mood is peaceful and hopeful, suggesting a sustainable future.

**Our
sustainability
journey**

SUSTAINABILITY

One group, one vision

In 2022 Unilin launched One Home, our group-wide sustainability strategy with ambitious targets in several domains. We look into the environmental impact of our products and production processes, but also at how we live at home, at work and on our planet.

ONEHOME



PLANET HOME

Greenhouse gas emissions must be reduced or even completely eliminated. This is a major challenge for the manufacturing industry, as we still too often burn fossil fuels and end-of-life products. We need to switch to circularity, using **renewable or recycled materials** and making **recyclable products**.



YOUR HOME

A healthy, comfortable and sustainable living environment is more important than ever. The products we make must provide **added value to our customers**, without compromising on **health, comfort or sustainability**.

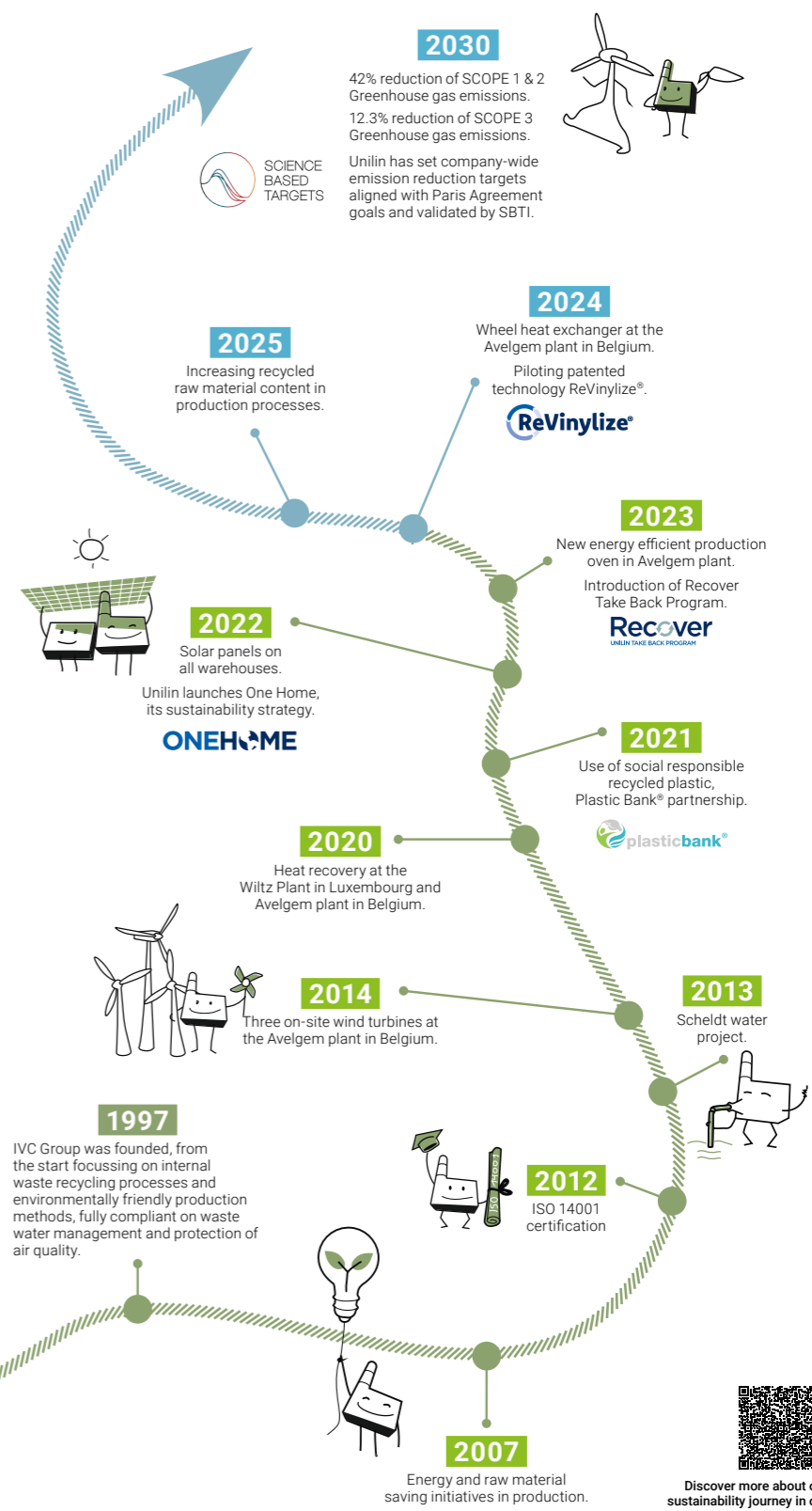
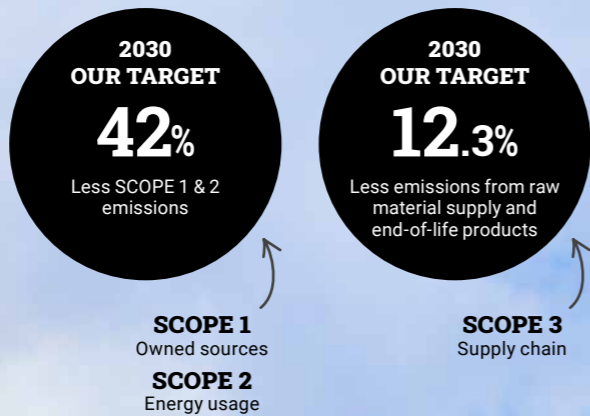


OUR HOME

Our company is a second home for **more than 8,000 employees**. We aim to create a **positive, stimulating and safe working environment** where they feel good and valued; an environment where everyone can challenge themselves and continue to grow. Our community, municipalities and neighbours also form a significant part of our story.

TIMELINE

Our sustainability journey through time



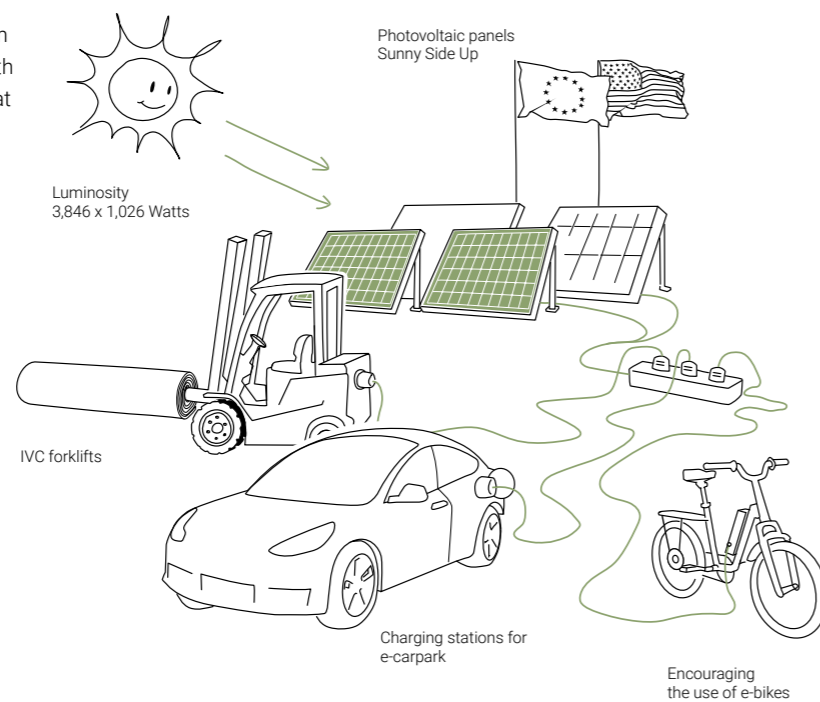
Discover more about our sustainability journey in our Sustainability brochure

NATURAL RESOURCES

Smart use of renewable energy

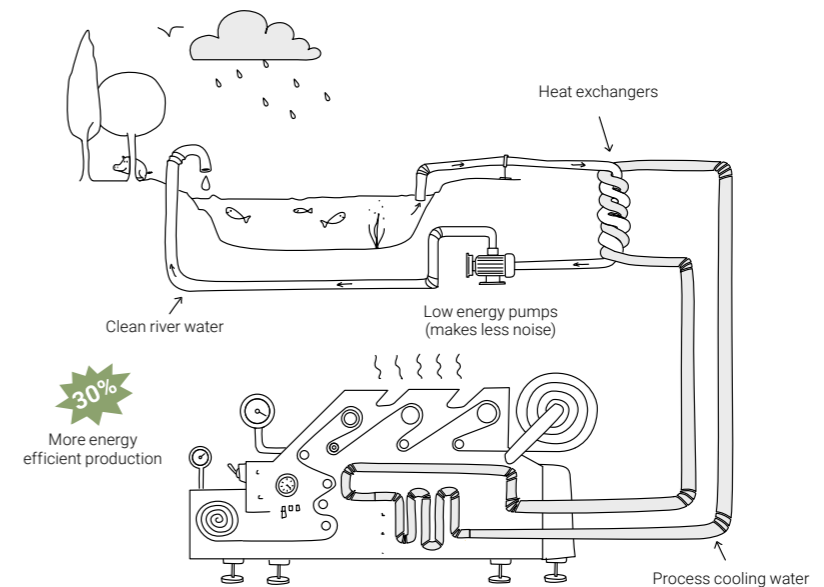
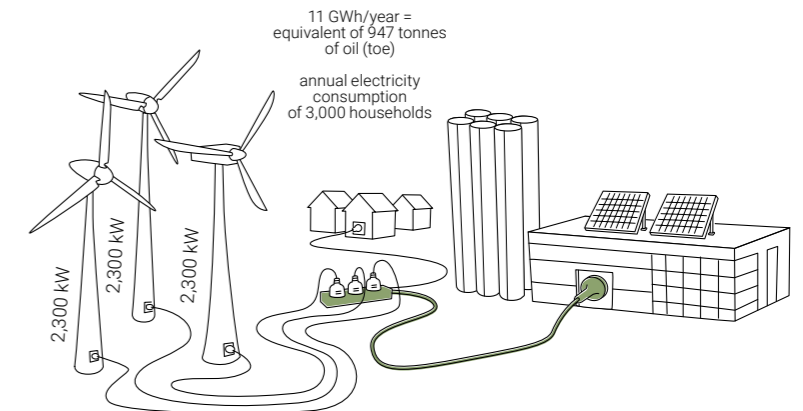
Sun

We use solar energy to make our fleet greener, in every sense of the word. For instance, we use the power from our solar panels to charge our employees' electric cars and e-bikes. Furthermore, even the forklifts in our warehouses are charged with solar energy. The result is a great amount of kilometres with zero emissions.



Wind

In 2014, three wind turbines have been installed on the Avelgem production site. The turbines produce around **11,000 MWh of renewable energy each year**. That's about as much as the yearly electricity consumption of 3,000 Flemish households. With this clean energy we power our own production facilities. Avelgem Green Power allows IVC and our **partner communities** to work together to promote green energy.



Solar Panels



The **IVC Flooring Development Centre** in Waregem (Belgium) has been turned into a sustainable base. It uses heat recovery, intelligent lighting technology and is powered by solar panels on the building.



Solar panels contribute significantly to reducing our plants' carbon footprint. We installed more than 6,000 solar panels on the roof of our **Avelgem plant**, generating 3,076 MWh per year.

Water

The manufacturing of vinyl flooring requires cooling water to absorb heat in the different stages of production. IVC has invested in a system that uses surface water from the nearby **river Scheldt as a secondary coolant**. Using only a minimal amount of energy, river water is pumped up and sent along the closed loop flow of our Avelgem

plant's process cooling water. The exchange of thermal energy (up to 4,000 kw) is achieved through state-of-the-art heat exchangers, so there is no direct contact between the river water and the process water en route.

Using minimal electricity compared to other cooling systems, these innovations have resulted in a **30% increase of energy efficiency** in the overall production of vinyl flooring. By eliminating the need for machine-driven refrigeration, we've also significantly **reduced on-site noise** and created better working conditions.

TOWARDS CIRCULARITY

Recover, A new life for floors

We try to reduce our environmental impact not only by producing efficiently, but also by the way we use materials. Today, production waste from sheet vinyl flooring and post-installation materials returned through our Recover Take Back Program are being recycled or repurposed for use in the backing of LVT products. This way, we work towards our goal of a more circular product.



Our partners in Recover are growing

We have several B2B partners working to take back sheet vinyl flooring, and the interest is growing globally. Recent partners who are main contributors to our programme are Trirecycle (UK), Jordan (DE), JMT Floorcoverings (NL), Cotap 5 (NL), Rubik (DE) and V-Podlahy (CZ), as well as many French customers and distributors who collect post-installation sheet vinyl flooring. Together, we are working on joint goals towards a more circular flooring industry.



CASE STUDIES

Collecting and recycling our sheet vinyl flooring.

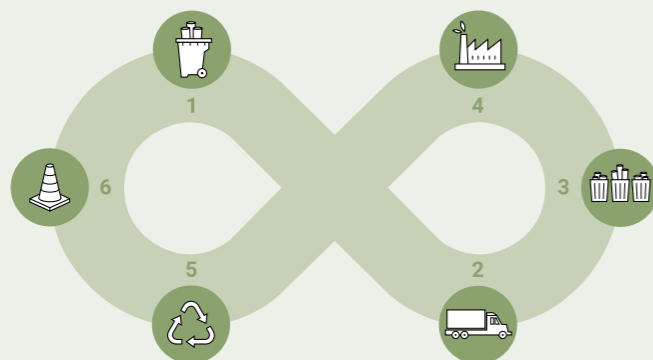
Introducing our partners to the recycling process

Last year, JMT Floorcoverings recovered 6 tonnes of sheet vinyl flooring. We visited a recycling centre with them, observing how 4 tonnes was recycled into granules intended for specific, non-flooring applications (downcycling). Another 1.2 tonnes was used for an innovative pilot, recycling textile-backed vinyl into granules that can be reused as a raw material for our LVT flooring.



How we recover sheet vinyl flooring

MORE INFO:



1. COLLECTING

After installation or at end-of-life, old floors and leftover rolls are collected into bags or on pallets. The customer contacts us to arrange collection.

2. TRANSPORT

Depending on what we've collected, we have several options to bring the waste back: to our recycling centres, send it to one of our partners or send it back to base.

3. SORTING

Before the collected materials are ready for recycling, they need to be sorted and cleaned prior to being shredded.

4. RECYCLING

At recycling centres, we convert flooring to raw materials for LVT or other applications, such as street furniture.

5. NEW FLOORING

The recycled material is used as raw material for new LVT flooring.

6. OTHER APPLICATIONS

If returned material can't be recycled into new flooring, because of contamination or not being REACH compliant, we then look for other applications.

King Charles' Coronation

United Kingdom

For King Charles' Coronation in Westminster Abbey, London, we supplied 726 m² of Ultimate Wood & Stone and Bingo sheet vinyl flooring, totalling 1.2 tonnes. After the event, we recovered and fully recycled the flooring, demonstrating our commitment to sustainability.



Certifications for our sustainability journey

At IVC, we aim to add value to our customers' living spaces without compromising on health, comfort or sustainability. In order to do so, we rely on third-party certifications to provide transparency in terms of environmental impact and safety of our products.

Member of the green industry

As a leader in flooring, we belong to a wide range of organisations that represent the industry. We are a member of ERFMI (EU), FEB (DE), DGNB (DE) and Kaléi (FR). With both ERFMI and Kaléi we are working together to provide our customers with collective Environmental Product Declarations (EPD) and Fiches de Déclaration Environnementale et Sanitaire (FDES), showing our industry efforts towards greener products. In Belgium, we are a member of the Fedustria and Voka employer organisations. As part of these organisations, we consider it important to work together for a green industry.



Environmental management

Since 1997 IVC has made substantial efforts towards a precisely tailored, fully integrated environmental management system. In 2012 we were awarded ISO 14001 certification, showcasing our commitment to environmental responsibility. This certification for ecological performance is a good reflection of our past efforts and current compliance with environmental rules and regulations.

Additionally we only purchase and process raw materials that are in line with the REACH regulations and only work with suppliers who comply with these regulations. In this way we are able to guarantee the integrity and quality of the end product that we deliver to the end user.



Quality management

As part of our ISO 9001 certification, we have implemented a quality management system that enables us to comply with the strictest regulations. This demonstrates our ability to consistently provide products that meet customer and regulatory requirements.



Ecolabels

Together with temperature and humidity, air quality is one of the most important factors in interior environments. We want to make sure that our vinyl flooring – often a central part of people's living spaces – contributes to healthy and safe living spaces, and to ensure that they don't pose any health risks to our end users. To do so, we make sure that our finished products intended for interior use comply with some of the strictest indoor emission labels.





Get in touch

Want to learn more about IVC Commercial's flooring solutions, or need help tackling an exciting project? We've got you covered.

Go to [ivc-commercial.com](https://www.ivc-commercial.com) to browse our collections, order samples, download inspirational brochures or stop by one of our showrooms.

You can also make an appointment with our dedicated team by emailing info@ivc-commercial.com.

Follow us on [in](#) [p](#) [i](#) [f](#) [v](#)



Silento 55

Heterogeneous vinyl



Technical specifications

Spécifications techniques - Technische specificaties - Technische Specificationen

Flooring type / Type de couverture - Type vloer - Fußbodenart		Acoustic flooring
Heterogeneous PVC / PVC hétérogène - Heterogene PVC - Heterogene PVC	EN ISO 11638	
Type of installation / Type de pose - Type installatie - Art der Installation		Semi- loose lay - Glued
Level of use / Classe d'usage - Gebruiksklasse - Eignungsklasse	EN ISO 10874	23 - 33 - 42
Total thickness / Epaisseur totale - Totale dikte - Gesamtdicke	EN ISO 24346	3.20 mm
Wear layer / Couche d'usure - Slijtlaag - Nutzschrift	EN ISO 24340	0.55 mm
Wear layer PUR treatment / Traitement polyuréthane - PUR slijtlaag behandeling - Schutz vor Schmutz PUR		Hyperguard+
Total weight/m² / Poids total/m² - Totaal gewicht/m² - Gewicht/m²	EN ISO 23997	ca. 2.140 g
Width / Largeur - Breedte - Breite	EN ISO 24341	2 m
Standard length / Longueur standard - Standaard lengte - Standardlänge	EN ISO 24341	ca. 25 m
Weight of standard roll / Poids standard des rouleaux - Standaard rolgewicht - Standard-Rollengewicht		ca. 110 kg
Inflammability / Classement feu - Brandklasse - Brandverhalten	EN 13501	Bfl-S1*
Slip resistance / Glissance - Antislip - Rutschfest	EN 13893	DS
Slip restraint / Résistance au glissement - Slipweerstand - Rutschhemmung	EN 16165 Annex B	R10
Residual indentation / Poinçonnement rémanent - Restindruk - Eindrückverhalten Average value / valeur moyenne - gemiddelde waarde - Durchschnittswert	EN ISO 24343-1	norm ≤ 0.20 mm 0.16 mm
Furniture leg resistance / Résistance au pied de meuble - Meubelpoottest - Möbelschubtest	EN ISO 16581	PASS
Curling / Incurvation - Krullung - Schüsselung	EN ISO 23999	≤ 8 mm
Electrical resistance / Résistance électrique - Elektrische weerstand - Elektrischer Widerstand	EN 1081	2.6 x 10 ⁷ Ohm
Static electrical propensity / Accumulation de charges électrostatiques - Electrostatistische Propensiteit - Elektrostatistische Verhaltung	EN 1815	≤ 2kV (antistatic)
Dimensional stability / Stabilité dimensionnelle - Dimensionele stabiliteit - Massänderung Average value / valeur moyenne - gemiddelde waarde - Durchschnittswert	EN ISO 23999	norm ≤ 0.20% 0.14%
Thermal conductivity / Conductivité thermique - Warmtedoorgangcoëfficiënt - Wärmeleitfähigkeit	EN 12667	0.088 W/(m.K)
Heat insulation / Isolation thermique - Thermische isolatie - Wärmedurchlasswiderstand	EN 12667	0.0358 (m².K/W)
Binder quantity in wear layer / Taux de liant dans la couche d'usure - Hoeveelheid bindmiddel in slijtlaag - Bindemittelmenge in der Nutzschrift	EN 10582	Type I
Abrasion group / Groupe d'abrasion - Slijtageweerstand - Verschleißverhalten	EN 660-2	Class T
Indoor air quality / Qualité de l'air intérieur - Binnenmilieu - Raumluftqualität		LOW VOC
Acoustic insulation / Efficacité acoustique - Kontaktgeluidisolatie - Trittschallverbesserungsmaß	EN ISO 717-2	ΔLw 20 dB
Castor chair resistance / Résistance aux chaises à roulettes - Bestand tegen stoelwielen - Stuhlrollenfestigkeit	EN ISO 4918	PASS
Castor type / Type de chaises à roulettes - Type stoelwielen - Stuhlrolle Typ	EN 12529	Type W
Light fastness / Résistance à la lumière - Lichtechtheid - Lichtechtheit	ISO 105-B02	≥ 6
Underfloor heating / Chauffage par le sol - Vloerverwarming - Bodenheizung	EN 12524	Suitable ≤ 27°C
Resistance to chemicals / Résistance aux produits chimiques - Chemicaliënresistentie - Chemikalienbeständigkeit	EN ISO 26987	Very good
Hot welding / Soudure thermique - Warm lassen - Thermische Verschweißung		Available
Cold welding / Soudure à froid - Koud lassen - Kaltverschweißung	Invisiweld	Suitable
Warranty years / Durée de la garantie en années - Garantie in jaren - Garantie Jahren		12

The warranty covers manufacturing defects and premature wear in the event of normal use. The products do not contain any substances from the current candidate list published by ECHA (substances of very high concern) to be published under the REACH regulation. Exclude any rubber parts that may come into direct contact with the flooring (chair ends, furniture, wheels). Use only PVC or polyethylene components. IVC reserves the right to change or amend any written information without notice. Ensure you have the latest information by referring to the website.

*Loose lay on concrete.



As of production from september 2024

